



## Croft House, Alferton Road

, Nottingham, NG7 3JE

£550 Per Month

Top 365 are delighted to bring to the market this stunning recently refurbished room to rent in a shared 6 bedroom apartment. Located at Canning Circus, within walking distance of City Centre, Trent University and with transport links to Nottingham University. Available to students and professionals.

£550PCM ALL INCLUSIVE

- ROOM TO RENT
- 6 BEDROOM HOUSE SHARE
- GREAT LOCATION
- CITY CENTRE
- £550 PCM ALL INCLUSIVE
- 2 SHOWER ROOMS
- UTILITY ROOM
- LIVING ROOM
- BALCONY
- FORTNIGHTLY COMMUNAL CLEANER

### Viewing

Please contact our Top365 Lettings Office Office on 0115 845 0708

if you wish to arrange a viewing appointment for this property or require further information





Floor Plan

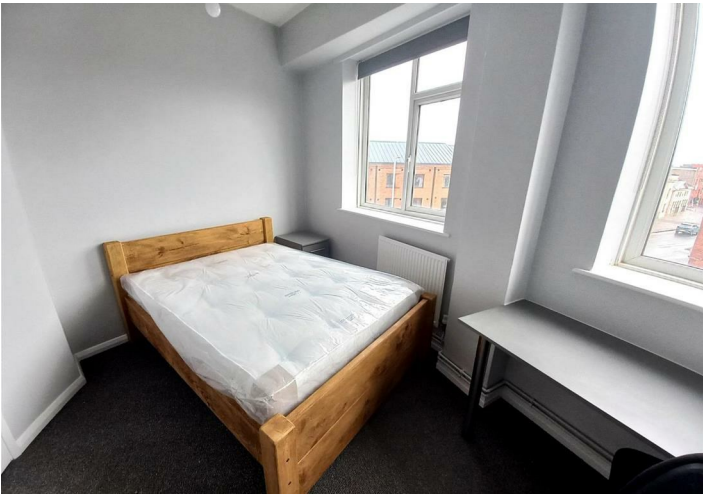


Area Map



Energy Efficiency Graph

Energy Efficiency Rating			Environmental Impact (CO <sub>2</sub> ) Rating		
	Current	Potential		Current	Potential
Very energy efficient - lower running costs			Very environmentally friendly - lower CO <sub>2</sub> emissions		
(92 plus) <b>A</b>			(92 plus) <b>A</b>		
(81-91) <b>B</b>			(81-91) <b>B</b>		
(69-80) <b>C</b>			(69-80) <b>C</b>		
(55-68) <b>D</b>			(55-68) <b>D</b>		
(39-54) <b>E</b>			(39-54) <b>E</b>		
(21-38) <b>F</b>			(21-38) <b>F</b>		
(1-20) <b>G</b>			(1-20) <b>G</b>		
Not energy efficient - higher running costs			Not environmentally friendly - higher CO <sub>2</sub> emissions		
England & Wales		EU Directive 2002/91/EC	England & Wales		EU Directive 2002/91/EC



These particulars, whilst believed to be accurate are set out as a general outline only for guidance and do not constitute any part of an offer or contract. Intending purchasers should not rely on them as statements of representation of fact, but must satisfy themselves by inspection or otherwise as to their accuracy. No person in this firms employment has the authority to make or give any representation or warranty in respect of the property.